

Extracted from RA 26 076/06.98

Page 1 of 1

Issue: 01.01

**Multi-function valve, direct operated
Model DZ 6 DP**

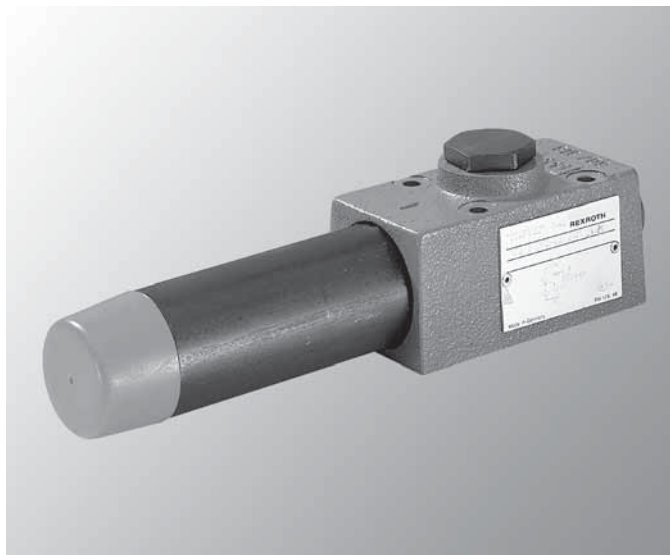
Size 6

Series 5X (Size 6)

Maximum operating pressure 315 bar (4600 PSI)

Maximum flow 60 L/min (16 GPM)

- Direct operated multi-function valve
- Mounts on ISO 5781-03 or 08, NFPA/ANSI P 03
- Pressure adjustment options
 - screw adjustment with locknut and protective cap
 - Handknob
- Four pressure adjustment ranges available to 4600 PSI
- Optional built-in reverse free flow check valve
- For subplates, see datasheet RA 45 052



Model DZ 6 DP2-5X/...M...

Ordering code

DZ	6	D	P	-5X/					*	
Multi-function valve, direct operated	= DZ									Further details to be written in clear text
Size 6, NFPA/ANSI P 03	= 6									Gauge port connection SAE threads
Direct operated		= D							12 =	
Subplate mounted			= P						no code =	NBR-seals, suitable for Petroleum oils (HM, HL, HLP)
Adjustable handknob				= 1					no code =	With reverse free-flow check valve
Screw adjustment with locknut and protective cap				= 2					no code =	Internally piloted, internally drained
Series 50 to 59 (50 to 59, externally interchangeable)					= 5X				X =	Externally piloted, internally drained
									Y =	Internally piloted, externally drained
						25 =				Max. adjustable pressure 25 bar (365 PSI)
						75 =				Max. adjustable pressure 75 bar (1090 PSI)
						150 =				Max. adjustable pressure 150 (2175 PSI)
						210 =				Max. adjustable pressure 210 (3050 PSI)

Technical data

Nominal size		Size	6
Sequence pressure (adjustable)		bar (PSI)	up to 25 (365); 75 (1090); 150 (2175); 210 (3050)
Operating pressure	Ports P, A, B (X)	bar (PSI)	up to 315 (4600)
	Ports T (Y)	bar (PSI)	up to 160 (2320)
Maximum flow		L/min (GPM)	up to 60 (16)
Weight (approx.)		kg (lbs.)	1.2 (2.6)

Extracted from RA 26 099/06.98

Page 1 of 1
Issue: 01.01

Multi-function valve, direct operated Model DZ 10 DP

Size 6, 10

Series 4X (Size 10)

Maximum operating pressure 210 bar (3050 PSI)

Maximum flow 80 L/min (21 GPM)

- Direct operated multi-function valve
- Mounts on ISO 5781-06, NPPA/ANSI P 06 interface
- For subplates, see data sheet RA 45 062
- Four pressure adjustment options
 - Screw adjustment with locknut and protective cap
 - Handknob
 - Key lock hand knob with scale
 - Hand knob with scale



Model DZ 10 DP2-4X/...M...

- Four pressure adjustment ranges available to 3000 PSI 1)
 - Optional built-in reverse free flow check valve
- 1) Maximum spring setting, valve permitted to 4600 PSI

Ordering code

<div> <div>DZ</div> <div>10</div> <div>D</div> <div>P</div> <div>2</div> <div>-</div> <div>/</div> <div></div> <div></div> <div>*</div> </div>									
Multi-function valve, direct operated	= DZ								Further details to be written in clear text
Size 10, P 03	= 10								no code = NBR-seals, suitable for Petroleum oils (HM, HL, HLP)
Direct operated	= D								V = FPM seals suitable for phosphate ester oils (HFD--R)
Subplate mounted	= P								no code = With reverse free-flow check valve
Screw adjustment with locknut and protective cap	= 2								M = Without reverse free-flow check valve
Series 40 to 59 (40 to 49, externally interchangeable)	= 4X								no code = Internally piloted, internally drained
									Y = Internally piloted, externally drained
									XY = Externally piloted, externally drained
									75 = Max. adjustable pressure 1.0 ... 75 bar (15...1090 PSI)
									210 = Max. adjustable pressure 1.0 ... 210 bar (15...3050 PSI)

Technical data (For applications outside these parameters, please consult us!)

Hydraulic fluid			Petroleum oil (HL; HLP); phosphate ester (HFD-R)
Temperature range of fluid		°C (°F)	NBR seals: −30 to +80 (−22 to +176) FPM seals: −20 to +80 (−4 to +176)
Viscosity range		mm²/s (SUS)	10 to 800 (60 to 3710)
Fluid cleanliness			Maximum permissible degree of contamination to ISO 4406, class 18/15. For this, we recommend a filter with a minmum retention rate of B10 ≥ 75.
Sequence pressure (adjustable)		bar (PSI)	25 (360); 75 (1100); 150 (2100); 210 (3100)
Operating pressure	Ports A, B, X	bar (PSI)	315 (4600)
	Port Y	bar (PSI)	160 (2300)
Max. permissible flow		L/min (GPM)	80 (21)
Installation position			optional
Weight (approx.)		kg (lbs.)	3 (6.6)

Extracted from RA 26 391/06.98

Page 1 of 1

Issue: 01.01

See Section 16 for applicable
Preferred/Spotlight part numbers
and unit price.**Multi-function valve, pilot operated
Model DZ**

Sizes 10, 20, 30

Series 5X

Maximum operating pressure 315 bar (4600 PSI)

Maximum flow 600 L/min (160 GPM)

- Direct operated multi-function valve
- Mounts on ISO 5781-06, 08, or 10, NFPA/ANSI P 06, P 08, or P10 interface
- For subplates, see datasheet RA 45 062
- Pressure adjustment options
- Four pressure ranges available, to 315 bar (4600 PSI)
- Optional built-in reverse free flow check valve



Model DZ20-2-5X/315XYM

Ordering code

<div> <div>DZ</div> <div></div> <div>-</div> <div>-5X</div> <div>/</div> <div></div> <div></div> <div></div> <div></div> <div>*</div> </div>										Further details to be written in clear text	
Multi-function valve	= DZ										Ports X and Y
Complete valve	= no code									12 =	SAE threads (standard)
P 06 (3/8", 1/2")	= 10									no code =	NBR seals, suitable for petroleum oils (HM, HL, HLP)
P 08 (3/4", 1")	= 20									no code =	with reverse free-flow check valve
P 10 (1-1/4", 1-1/2")	= 30									M =	without reverse free-flow check valve
Adjustment mechanism											Piloting
Hand knob	= 1									no code =	internal pilot, internally drained
Screw adjustment with locknut and protective cap	= 2									X =	external pilot, internal drain
Series 50 to 59	= 5X									Y =	internal pilot, external drain
(50 to 59; externally interchangeable)										XY =	external pilot, external drain
											Maximum pressure setting
										50 =	... 50 bar (725 PSI)
										100 =	... 100 bar (1450 PSI)
										200 =	... 200 bar (2900 PSI)
										315 =	... 315 bar (4600 PSI)

Technical data

Mounting position				Optional		
Weight (approx.)	valve size			10	20	30
– Subplate mounted	DZ...	kg (lbs.)		3.4 (7.5)	5.3 (11.7)	8.0 (17.7)
Hydraulic						
Operating pressure, ports A, B, X		bar (PSI)		... 315 (4600)		
Backpressure, port Y		bar (PSI)		... 315 (4600)		
Setting pressure	maximum	bar (PSI)		... 50 (725), ... 100 (1450), ... 200 (2900), ... 315 (4600)		
Maximum flow	valve size	L/min (GPM)		200 (52.8)	400 (105.7)	600 (158.6)