

**Extracted from RE 26411/03.98**

Page 1 of 2

Issue: 01.01

See Section 16 for applicable  
Preferred/Spotlight part numbers  
and unit price.

**Pressure shut-off valve, pilot operated  
Model DA**

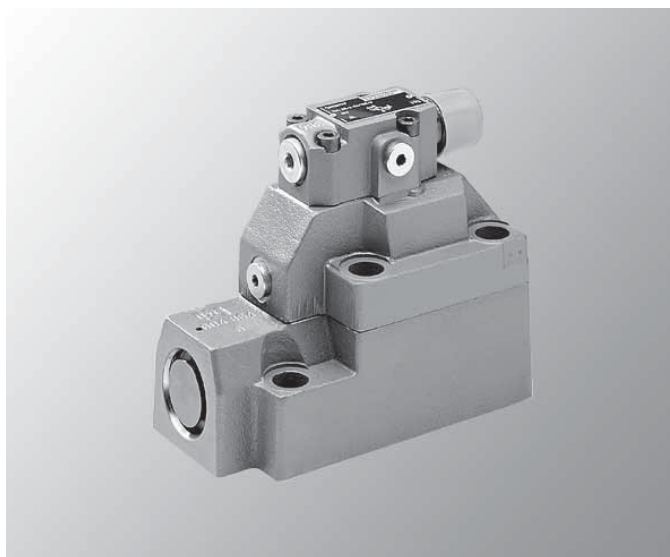
Nominal sizes 10, 25, 32

Series 5X

Maximum operating pressure 315 bar (4600 PSI)

Maximum flow 240 L/min (63 GPM)

- For subplate mounting (subplates must be ordered separately)<sup>1)</sup>
- For installation in manifolds
- Adjustment options:
  - Rotary knob
  - Sleeve with internal hexagon and protective cap
- Three pressure ratings



Model DA 30 -2-5X/100-17

**Ordering code**

DA																			-	-	5X	/	-		/					*
Without directional valve = No code																								Further details to be written in clear text						
Nominal size 10																								No code = NBR seals						
Nominal size 25																								V = FPM seals						
Nominal size 32																								(other seals on request)						
Adjustment elements																								⚠ Attention!						
Rotary knob																								The compatibility of the seals						
Sleeve with internal hexagon and protective cap																								and pressure fluid has to be						
Series 50 to 59																								taken into account!						
(50 to 59: unchanged installation and connection dimensions)																								No code = Internal pilot oil drain						
Settable pressure range																								Y = External pilot oil drain						
50 to 100 bar (725 to 1450 PSI)																								Switching pressure differential (P → A)						
100 to 200 bar (1450 to 2900 PSI)																								10 = In the mid range 10%						
200 to 315 bar (2900 to 4600 PSI)																								17 = In the mid range 17%						

1) For subplates, see data sheet RA 45 062.